

Notes:

1. All signs and road markings to be in accordance with the Traffic Signs Regulations and General Directions 2002.
2. Double Yellow lines to be 'primrose' colour and 50mm wide.
3. Positioning and locations to be in accordance with the guidance provided in the Department of Transport Traffic Signs Manual.
4. Materials, processes and quality of workmanship employed in the installation of signing and marking to be in accordance with the Specification for Highway Works.

Key:

- 1020.1 Diagram Ref. No.
- Loading and unloading of vehicles on a side of a length of road prohibited at any time.
- New Bollards - NB1PF, NB2KR, NB3PF, NB4PF
- PF = Plain Faced
- KR = Keep Right
- To be SignPost Solution 3sixty or similar approved
- Proposed railing

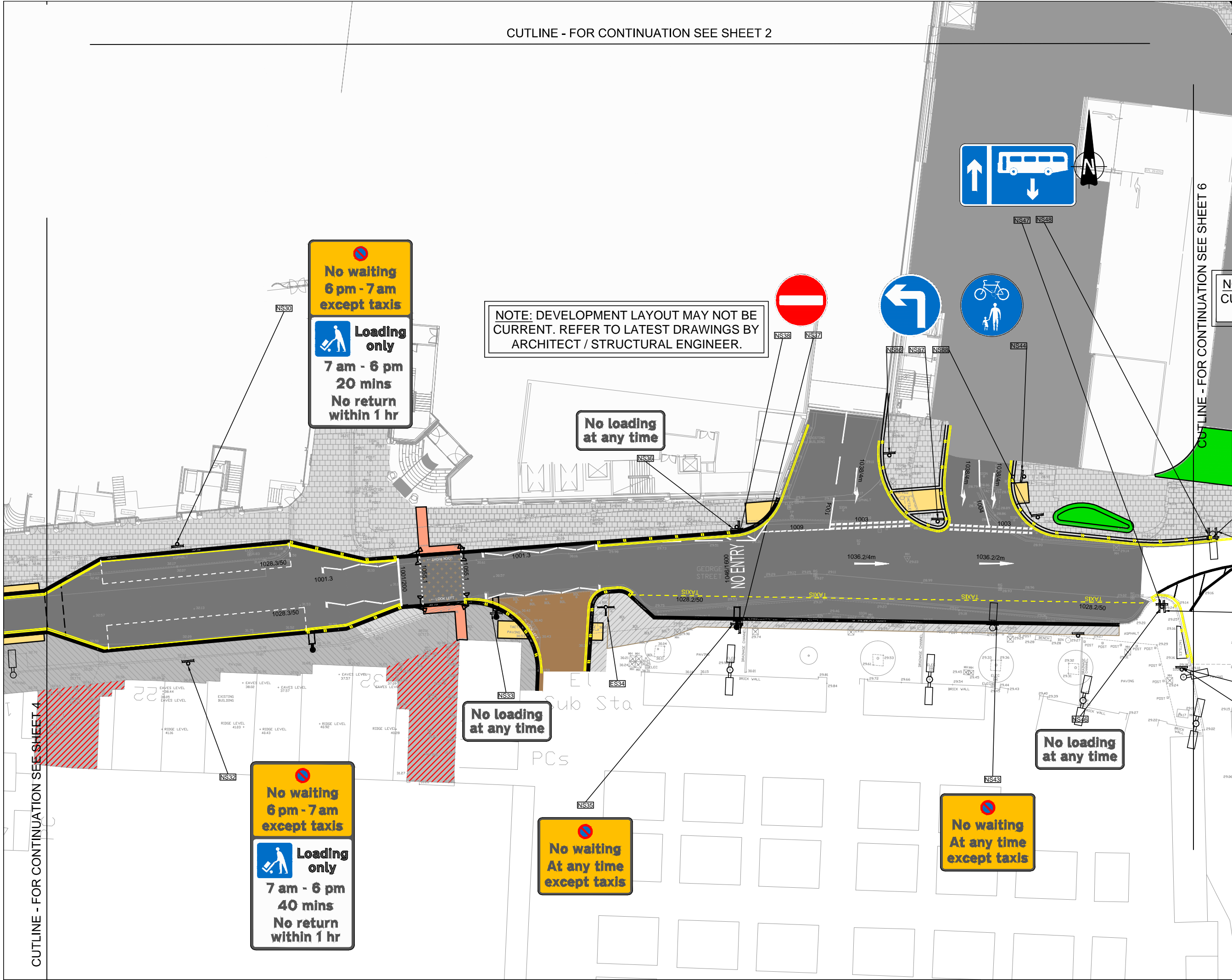
ED4	08:03:16	AMENDED AS PER COMMENTS	MC
ED3	16:02:16	RAMP ADDED	GH
ED2	15:01:16	LANDSCAPING ADDED	GH
ED1	11:12:15	LAYOUT AMENDED - ISSUED FOR CONSTRUCTION	MC
A06	26:11:15	LAYOUT AMENDED	MC
A05	18:09:15	LEADS CC COMMENTS ADDRESSED	GH
A04	09:09:15	LEADS CC COMMENTS ADDRESSED	GH
A03	14:07:15	LEADS CC COMMENTS ACTIONED / AREAS WITHIN DEVELOPMENT ADDED	SP
A02	02:03:15	EXTENT OF HATCHING ALTERED. JLP VEHICULAR ACCESS AMENDED	SP
A01	16:10:14	FIRST ISSUE	SP

Project	VICTORIA GATE, LEEDS
Title	TRAFFIC SIGNS, MARKINGS & BARRIERS SHEET 5
Client	HAMMERSON

**Waterman**  
Transport & Development

Pickfords Wharf Clink Street London SE1 9DG  
t 020 7928 7888 f 020 7928 3033  
mail@watermangroup.com www.watermangroup.com

FOR CONSTRUCTION				
Designed by	SP/MC	Checked by	MC	Project No
Drawn by	CM/SP	Date	FEB 14	34992
Scale: @ A1 / A3 work to figured dimensions only	1:200 / 1:400	Computer File No	34992SA75/2015.dwg	
Publisher	Zone	Category	Number	Revision
C	SA	75	1200-5	E04



CUTLINE - FOR CONTINUATION SEE SHEET 4

CUTLINE - FOR CONTINUATION SEE SHEET 6